

ENRICHMENT AT WADDSDON

Vision: To ensure that all students, whatever their starting point or specific educational needs, flourish at Waddesdon and achieve outstanding progress in all subjects, in particular English and Maths.

The Learning Support Department at Waddesdon is referred to as the ‘Enrichment Department’. We support a wide range of students at many levels, including Sixth Formers. Many of our students are gifted in some area and have exceptional talents. In a school where all students are valued equally, it seems inappropriate to refer to a significant minority as ‘Special’. We refer to our students as having ‘Additional Educational Needs’.

The staff and governors of the school believe that every student has an entitlement to develop their full potential. Educational experiences are provided which develop students’ achievements and recognise their individuality. Diversity is valued as a rich resource, which supports the learning of all. In this school, we recognise a child’s right to a broad, balanced, relevant and challenging curriculum, which is appropriate to their individual abilities, talents and personal qualities.

Special Educational Needs Profile

Due to our reputation for inclusion and excellent pastoral care, the number of students in receipt of an EHCP has increased

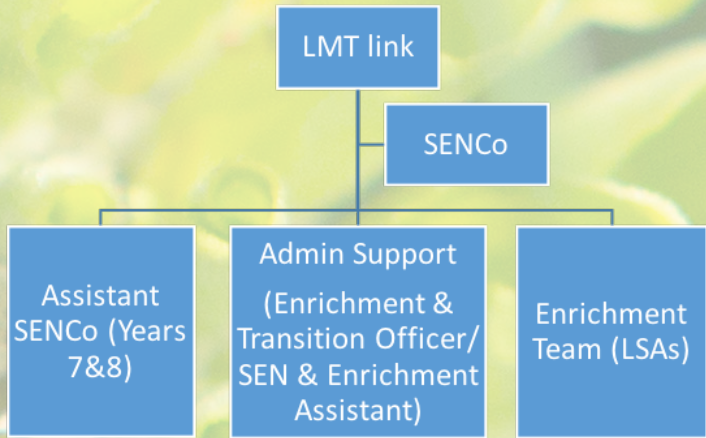
significantly at Waddesdon in recent years. Currently, SEN comprises 14% of the student population, with 5.5% of students holding an EHCP.

Year	EHCP/ Statements	SEN Support	Total SEND
7	18	16	34
8	9	21	30
9	12	13	25
10	10	15	25
11	3	16	19
12	3	3	6
13	0	1	1
Total	55	85	140

Job Role

In order to best provide for these young people, the role of SENCo has been designed in order to separate out the current Leadership Role for SEN with a dedicated SENCo whose sole focus will be on the well-being and progress of these students.

The SENCo will be supported by an Assistant SENCo and by an experienced and highly skilled team of Learning Support Assistants (18). The twin roles of Enrichment & Transition Officer and SEN & Enrichment Assistant provide the necessary support for transition, appropriate paperwork, external liaison and the preparation for annual reviews. The new SENCo will be supported in their role by a team of highly professional staff.



We welcome applications from interested candidates and are always delighted to show interested parties around the school. If you share our values and ambitions for our young people, we’d love to hear from you.

Specialist Provision

The Enrichment Department is located in the Thorp Building and is equipped with two ‘pods’, predominantly used for small group teaching of literacy and numeracy. Both are equipped with an LED interactive touch screen display. In addition there are 15 networked computers for individuals or groups of students. There is a particular link to the Maths and English Departments, ensuring continuity between learning in lessons, consolidation in Enrichment and personalised intervention at the point of need. Lessons in the Enrichment Department are focused and objective-led. An additional ICT suite is staffed after school for Homework Club until 4.20pm. Homework Club is staffed by LSAs who assist students requiring

help with planning or doing homework assignments.

The school works closely with the local authority. This year two SEN students attended the inaugural “Shout Out for SEND” conference. It gave Waddesdon and its students the voice to help develop the new Buckinghamshire SEND strategy. We hope to develop this partnership over the coming years.

What the Students Say:

“My LSA helps me with every lesson if I need help. She is a very great LSA.”

“I think that Enrichment has helped me a lot for my English and Maths. I like it that we do more of the same maths as we are doing in our big classes.”

“Enrichment has helped me with spelling and reading because I can read better than when I first came to Waddesdon and my times tables have improved a lot.”

“My experience in Enrichment has been good. It has helped me with a lot of my struggles, especially with my writing.”

“My experience of Enrichment has been a delight. It is my favourite lesson and I feel I’ve improved since starting.”

December 2019

